

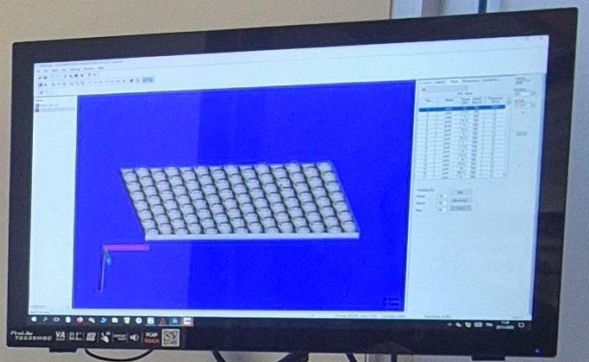


Contrat de Plan  
Etat-Region

Europe  
Nouvelle-France

RITMEA

es



# Satsuma

## High Power Ultrafast Fiber Laser

### Compact and high repetition rate

With its extremely high repetition rate and excellent beam quality, the Satsuma combines the high quality of ultrafast lasermicro-machining with the high speed processing required for industrial applications. Optional green and UV outputs extend the application range.



### Applications

#### Industry:

- > Microelectronics
- > MicroMachining

#### Science:

- > Multiphoton imaging
- > Optogenetics
- > Ultrafast Spectroscopy

#### Medical:

- > Ophthalmology
- > Medical Device Manufacturing

### Features

- > High Throughput
- > High speed
- > Industrial design
- > Optional green and UV outputs

# Specifications

	Satsuma	Satsuma HP	Satsuma HP <sup>2</sup>	Satsuma HP <sup>3</sup>
Average power	> 5 W	> 10 W	> 20 W	> 50 W
Energy per pulse	> 10 μJ	> 20 μJ	> 40 μJ	
Pulsewidth	< 350 fs to > 10 ps			
Repetition rate	From single shot to 40 MHz			
Central wavelength	1030 +/- 5 nm			
Beam circularity	> 87 %			
Beam pointing stability	<25 μrad/°C			
Pulse to pulse energy stability	<2% RMS			
Long term mean power stability	<1% RMS over 100 hours			
Warm-up time	< 30 min			

Specifications are subject to change without prior notice | © 04-2018 | CM18-0024-A

## Dimensions

All models (L x l x H)	52 x 33 x 12 cm
------------------------	-----------------

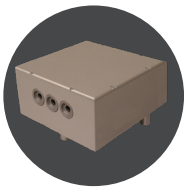
## Weight

All models	23 kg
------------	-------

## Cooling

Satsuma, HP, HP <sup>2</sup>	Air-cooled
Satsuma HP <sup>3</sup>	Water-cooled

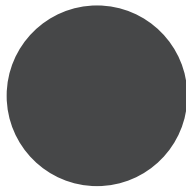
# Options



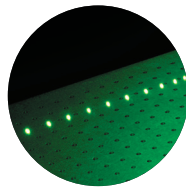
SHG / THG / FHG



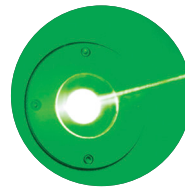
MANGO OPA



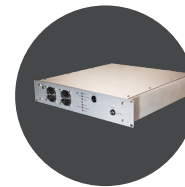
Non Linear  
Compression



FemtoBurst



FemtoSynch



Synchrolock

